

1st Trumpet in B $\flat$

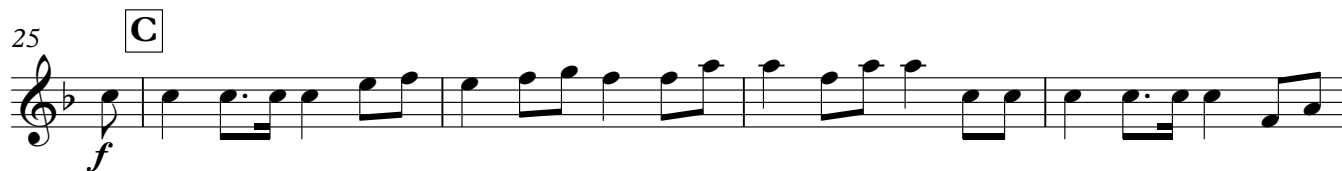
# Parade-Marsch

des Regiments

Königs-Jäger zu Pferde Nr. 1

Richard Strauss  
Instr. Manuel Epli

**Allegro maestoso**



38 div.

unis.

Detailed description: This staff contains measures 38 through 41. It begins with a treble clef, a key signature of two flats (B-flat and E-flat), and a common time signature (C). The melody consists of eighth notes. At the end of measure 41, there is a fermata over a quarter note, followed by a repeat sign and a double bar line. The dynamic is mezzo-forte (mf).

42 **E II. Trio**

1 player 2 players div.

*mf* *f* unis.

Detailed description: This staff contains measures 42 through 49. It starts with a treble clef, two flats key signature, and common time. Measure 42 has a fermata. The dynamic is mezzo-forte (mf). At measure 43, the instruction '1 player' is written. At measure 45, '2 players' is written. At measure 47, 'div.' is written. At measure 48, 'unis.' is written. The dynamic becomes forte (f) at measure 45. The staff ends with a double bar line.

50

*p* cresc. *f*

Detailed description: This staff contains measures 50 through 54. It begins with a treble clef, two flats key signature, and common time. The dynamic is piano (p). A crescendo (cresc.) is indicated between measures 51 and 52. The dynamic becomes forte (f) at measure 53. The staff ends with a double bar line.

55 **F** all

*ff*

Detailed description: This staff contains measures 55 through 58. It starts with a treble clef, two flats key signature, and common time. The dynamic is fortissimo (ff). The instruction 'all' is written above the staff. There are two triplet markings (3) under the eighth notes in measures 56 and 58. The staff ends with a double bar line.

59

Detailed description: This staff contains measures 59 through 62. It continues the melodic line with eighth notes and slurs. The staff ends with a double bar line.

63 **G**

Detailed description: This staff contains measures 63 through 65. It features triplet markings (3) under the eighth notes in measures 63 and 65. The staff ends with a double bar line.

66

Detailed description: This staff contains measures 66 through 69. It continues the melodic line with eighth notes and slurs. There is a triplet marking (3) under the eighth notes in measure 66. The staff ends with a double bar line.

70 **H**

*fff*

Detailed description: This staff contains measures 70 through 73. It starts with a treble clef, two flats key signature, and common time. The dynamic is fortississimo (fff). The instruction 'H' is written above the staff. The staff ends with a fermata over a quarter note, followed by a repeat sign and a double bar line.